

## Answers: 6.1.5.6 Lab - System Utilities in Windows

### Introduction

In this lab, you will use Windows utilities to configure operating system settings.

### Recommended Equipment

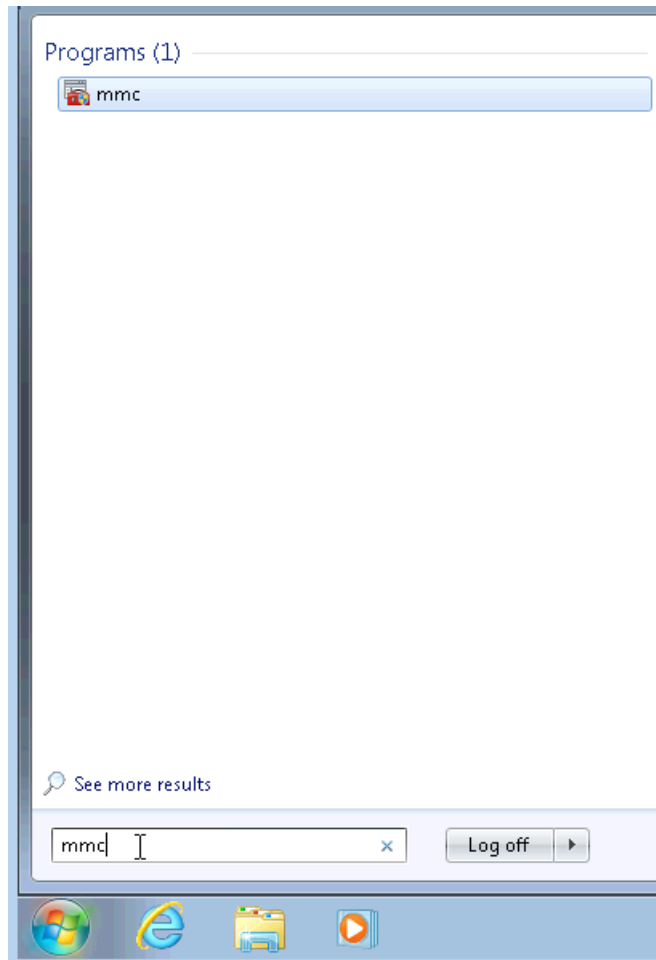
The following equipment is required for this exercise:

- A computer running Windows

### Step 1: Open the management console.

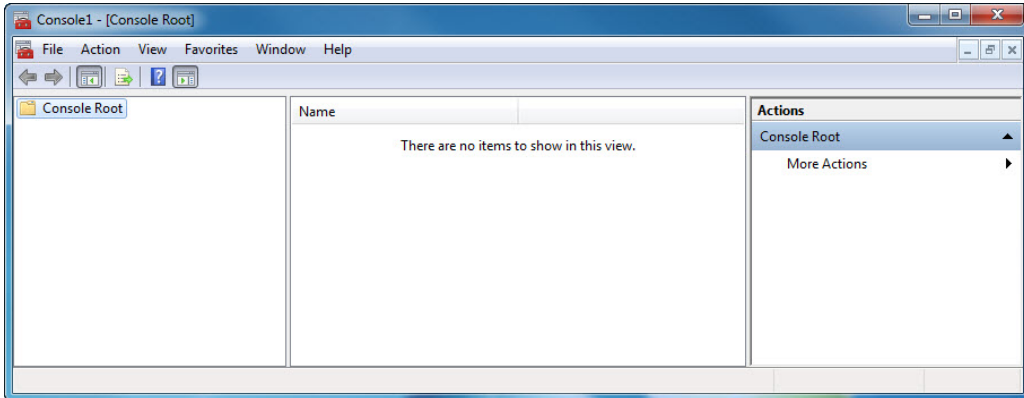
- Open the Microsoft Management Console. Click **Start**, type **mmc**, and press **Enter**.

**Note:** In Windows 8, type **mmc** in the **Search Charm**.

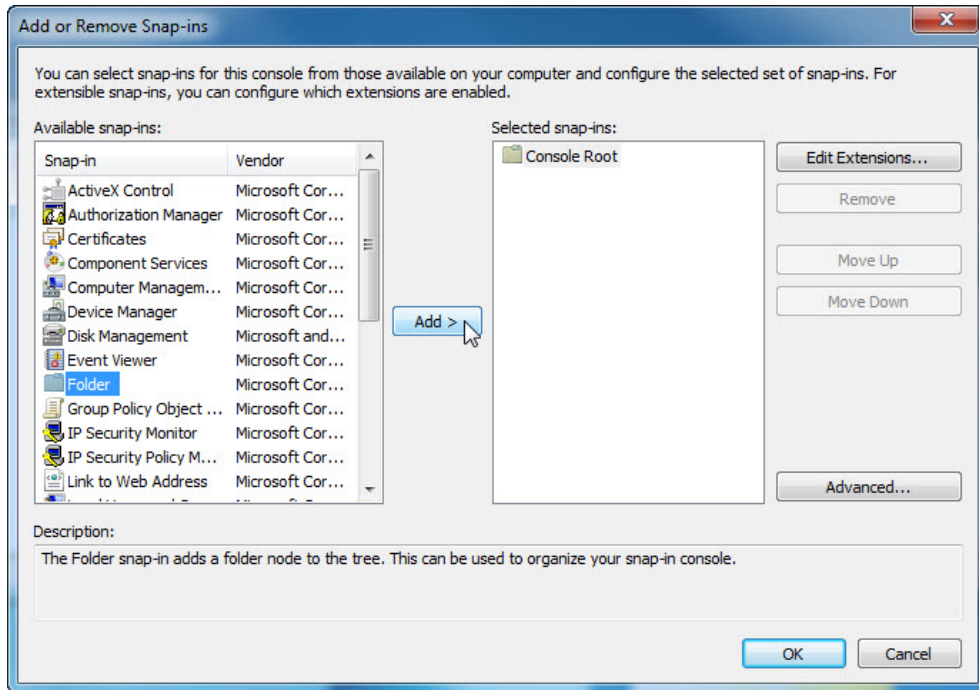


## Lab - System Utilities in Windows

- b. The **Console1 - [Console Root]** window opens. To build your own custom console, click **File > Add/Remove Snap-in**.

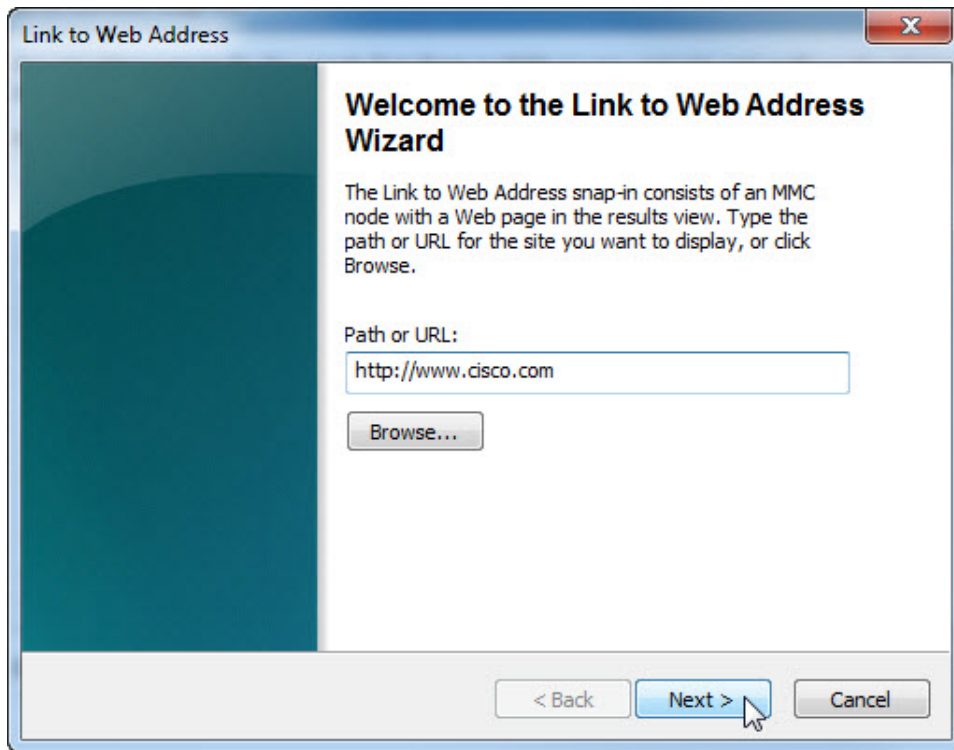


- c. The **Add or Remove Snap-ins** window opens. To add a folder snap-in, to organize your snap-ins, scroll down until you see the **Folder** snap-in. Select **Folder** and click **Add>**.

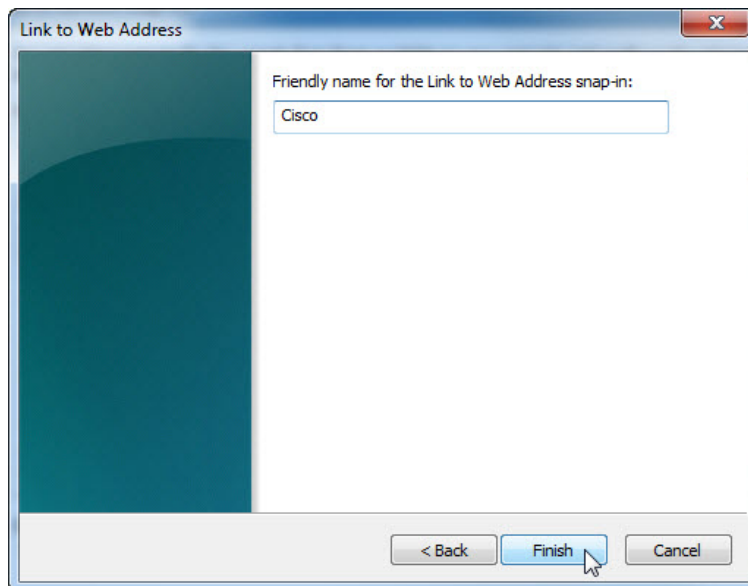


- d. To add the **Link to Web Address** snap-in, scroll down and select **Link to Web Address**. Click **Add>**.

- e. The **Link to Web Address** wizard opens. In the **Path or URL:** box type **http://www.cisco.com**. Click **Next>**.

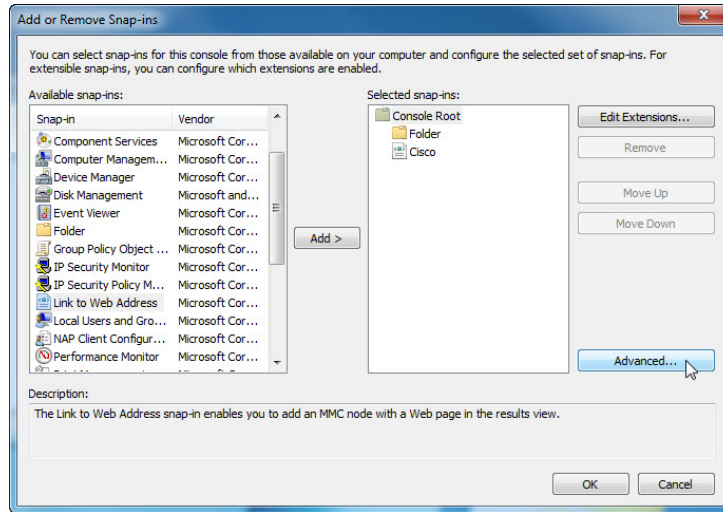


- f. In the **Friendly name for the Link to Web Address snap-in** box, type **Cisco**. Click **Finish**.

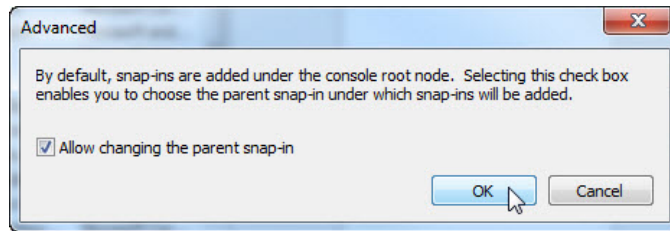


**Step 2: Create a custom management console.**

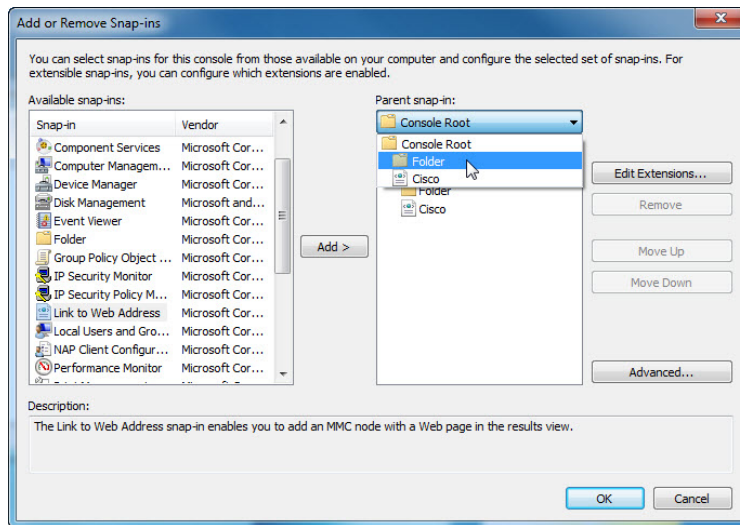
- a. To add snap-ins to the folder snap-in, click **Advanced**.



- b. The **Advanced** window opens. Check the box next to **Allow changing the parent snap-in**. Click **OK**.



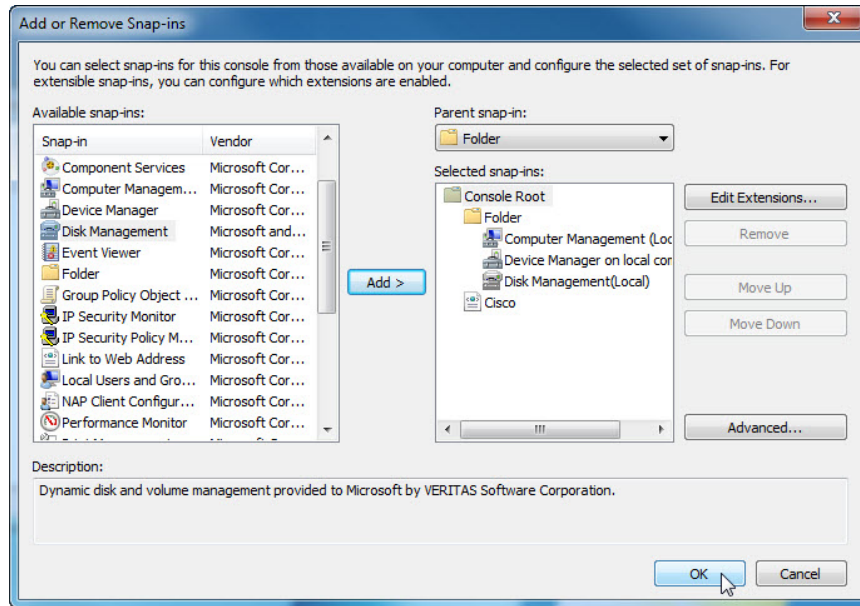
- c. A drop-down menu appears for **Parent snap-in**. In the **Parent snap-in** box, select **Folder**.



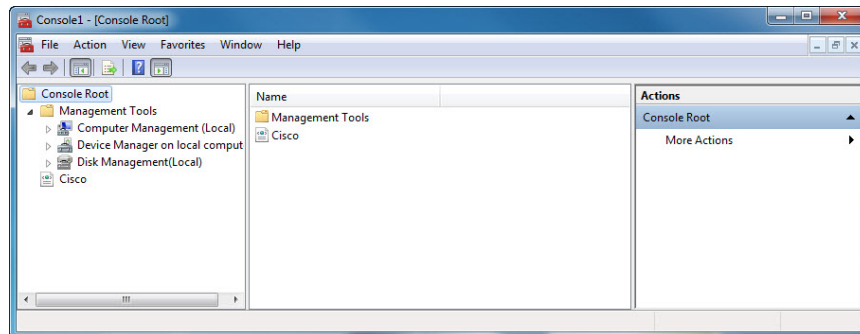
## Lab - System Utilities in Windows

- d. Add the following snap-ins: **Computer Management**, **Device Manager**, and **Disk Management**.

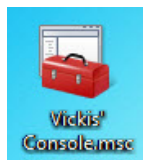
**Note:** When you are asked what computer the snap-in will manage, select the default by clicking **Finish**. Click **OK** to accept all changes.



- e. The **Console1** window opens. Right-click the **Folder** icon and select **Rename**. Change the name of the folder to **Management Tools**.



- f. To save the custom console, click **File > Save As**. Change the file name to your name. Example: **John's Console**. Change the **Save in** box to **Desktop**. Click **Save**.
- g. Close all open windows.
- h. On the desktop, double-click the **Console** icon to re-open the console with your snap-ins.



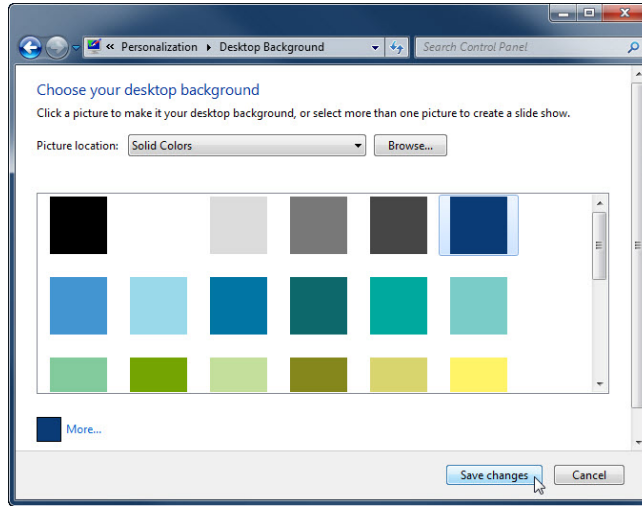
- i. Review the **Management Tools** folder by double-clicking on the tools. Close the **Console** window when you finish your review.

**Step 3: Change your desktop background settings.**

- a. To open the **Choose your desktop background** window, right-click the **Desktop**, select **Personalize** and click **Desktop Background**.

What is the background picture?

- b. Click the **Picture location** drop-down button and select **Solid Colors**. Select a **blue** color.

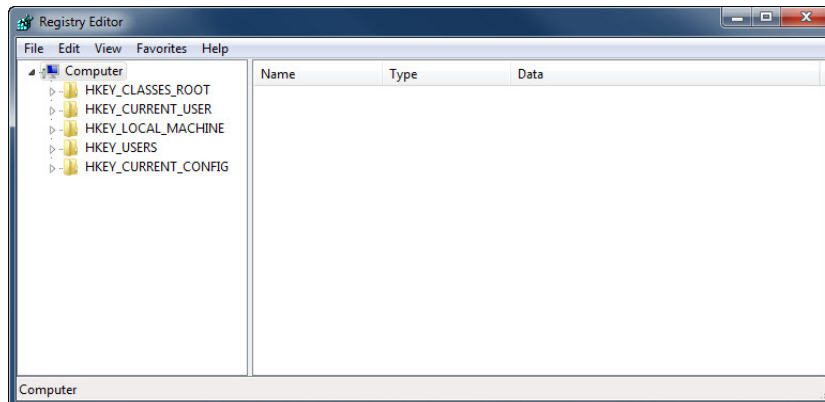


- c. Click **Save changes**. The computer screen should now have a blue background. If not, ask the instructor for assistance.
- d. Close all open windows.

**Step 4: Open the registry editor.**

- a. To open the **Registry Editor**, click **Start** and type **regedit**. Press **Enter**.

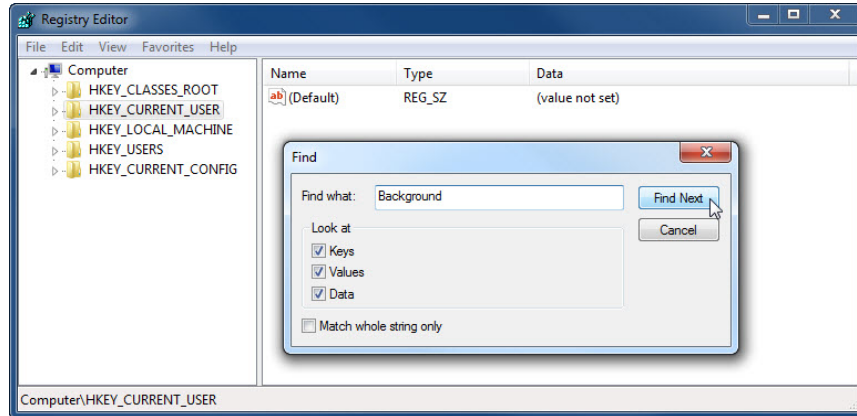
**Note:** Do not make any changes in the Registry Editor without instructor permission.



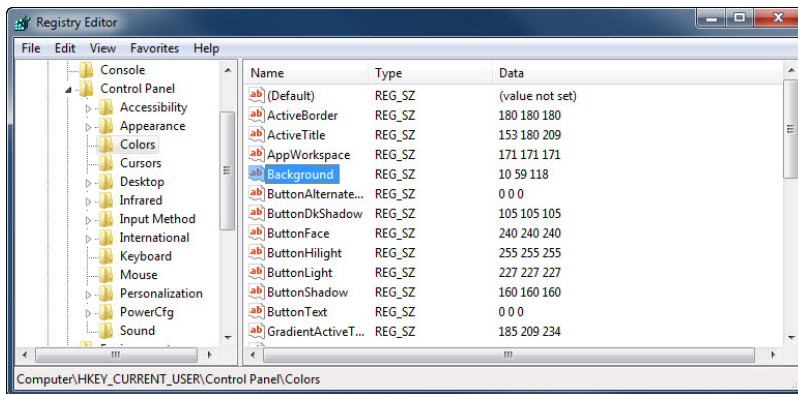
## Lab - System Utilities in Windows

- b. Select the **HKEY\_CURRENT\_USER** entry. To search for the **Background** key, click **Edit > Find...**, and type **Background**. Click **Find Next**.

**Note:** in Window 8, expand the **HKEY\_CURRENT\_USER** entry by clicking the arrow to the left. Select **Control Panel** from the list.



- c. The **Background** value is located. Leave this window open.



In which folder is the **Background** located?

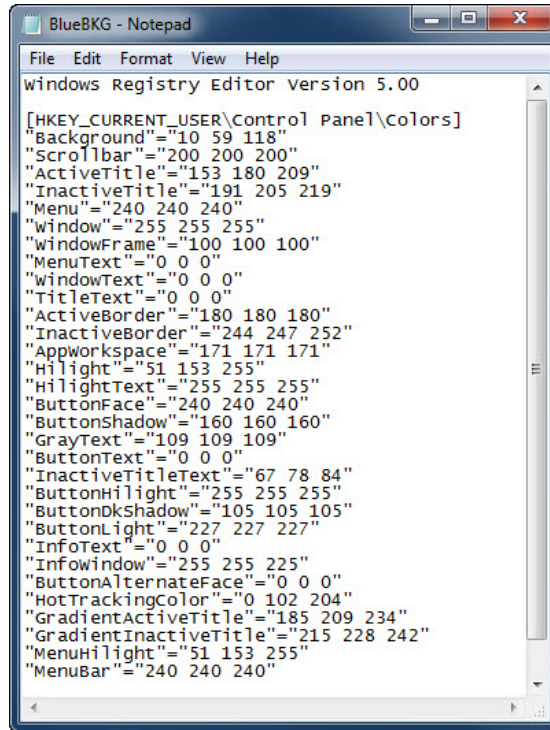
What is the data value of the **Background** (hint – it has three numbers that correspond to red, green, and blue)?

### Step 5: Export a registry key.

We will now export the **HKEY\_CURRENT\_USER\Control Panel\Colors** folder.

- a. In the left pane, select the **Colors** folder and click **File > Export**.
- b. Save the file to the Desktop with the name **BlueBKG**.
- c. At the desktop, right-click the **BlueBKG.reg** icon and select **Edit**.

- d. Notepad opens displaying the contents of **BlueBKG.reg**.

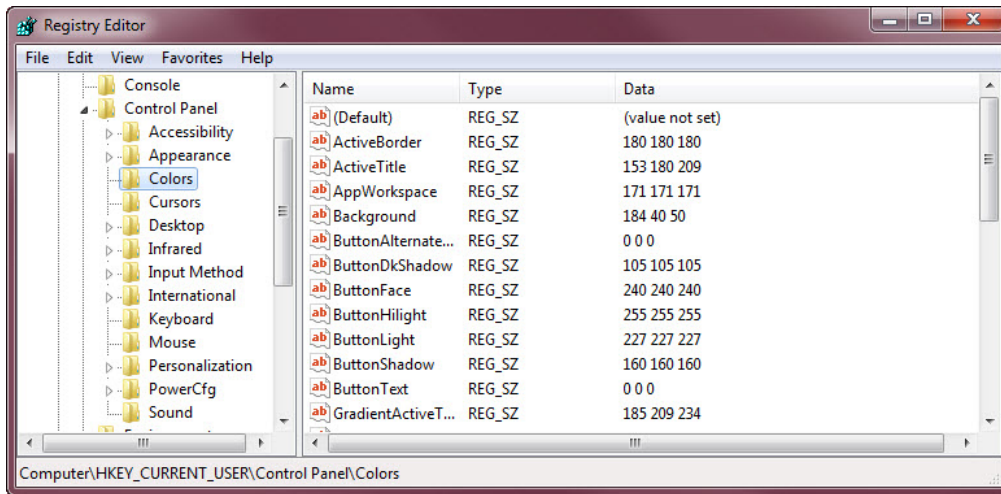


What is the data value of the **Background**?

- e. Close the **BlueBKG.reg – Notepad** window.
- f. Open the **Choose your desktop background** page in Personalize appearance and sounds by right-clicking the **Desktop > Personalize > Desktop Background**.
- g. Click the **Location** drop-down button and select **Solid Colors**. Select a **red** color.
- h. Click **Save** changes. Close the **Personalization** window.
- i. The desktop should be red. Click the **Registry Editor** window.



- j. On your keyboard, press **F5** to refresh the **Registry Editor** window.

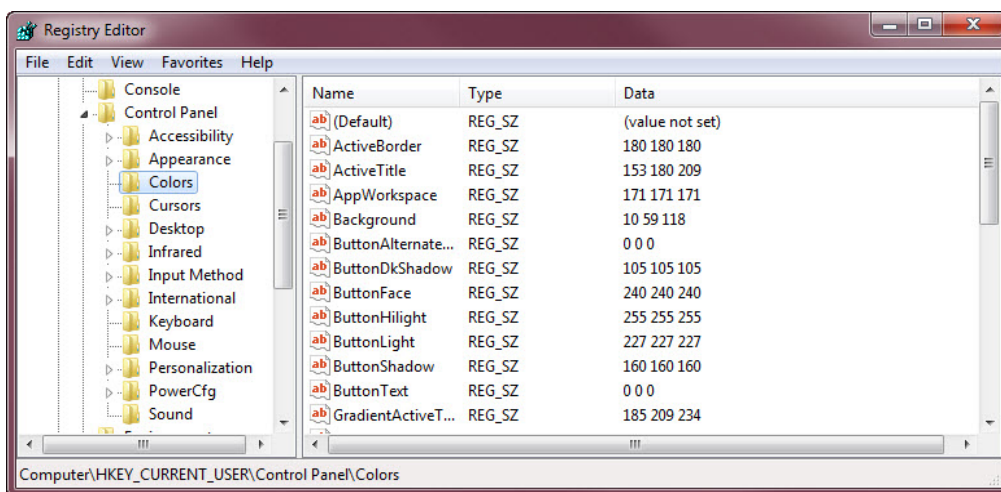


What is the data value of the Background? Answers may vary based on the shade of red selected in Display Properties.

**Step 6: Import a registry file.**

We will now import the **BlueBKG.reg** file.

- a. Click the **Registry Editor** window.
- b. Click **File > Import**. Locate and click the **BlueBKG.reg** file then click **Open**.
- c. The **Registry Editor** informational message opens letting you know that keys and values have been successfully added to the registry. Click **OK**.



- d. Select the **Registry Editor** window.  
What is the data value of the Background?

What is the color of the desktop?

- e. Restart the computer.  
What is the color of the desktop?
- f. Reset **Display Properties Background** to the original settings.
- g. Close all open windows.
- h. Delete the custom console and BlueBKG file on the desktop.

**Reflection**

1. Why would it be beneficial to add snap-ins to the mmc that are for other computers on the network?
  
  
  
  
  
  
  
  
  
  
  
  
  
  
  
  
  
  
  
  
  
  
2. After restarting the computer, why was the desktop color changed?